

COMA

MICHAEL BENNETT

# **SURFACE TENSION**

EXHIBITION CATALOGUE

'Surface Tension' is the latest solo exhibition from Australian born, Berlin-based artist Michael Bennett.

Consisting of a series of all new paintings and a companion installation the exhibition focuses on time and space in the context of artistic process as well as an exploration of surface and its value / significance in contemporary art.

The abstract paintings are created using a mix of mediums, including; acrylic, enamel, oil stick and lead pencil. These are applied, adjusted and adapted intuitively and without hesitation, resulting in broad and bold gestures and mark making. Serving as a visual record of emotions past, whilst also maintaining strong evidence of the artists interaction with the work, they become frozen moments of time, eternalised in a state of genuine vulnerability. This visible honesty and personality scribed into each piece offers an approachable and engaging entry point to the work.

The tension and visual friction created between the materials and surfaces of the three-dimensional works in the exhibition, highlight and conceptually mirror those same contrasts and notable milestones within the painted works. Fast paced gestures of the painted work, coupled with the stillness and mundane materials that make up the sculptures, create a more thorough, balanced and spatially considerate viewing environment in which calmness and chaos can co-exist.

Additionally this provides an opportunity for the audience to explore and deliberate, both the works and themselves within. This continues Bennett's on-going and underlying interest in self-exploration and inner discovery.

Produced by combining a selection of found and ready-made objects and common construction materials, alongside specifically produced and deliberately altered 'artistic' elements, the installation elements exemplify and physicalise themes of time, space and surface.

When unified these paintings and installations produce scenes which recall a fictional time or moment. Components which existed uniquely and separately in the world prior to their marriage, have now been re-born/re-purposed and harmonised in the eyes of the artist.

Immortalised imagery in a temporary space for a limited time...



**Michael Bennett**

*Blackcurrent, 2016*

*Mixed Media on Board, Framed in Tasmanian Oak*

*113 x 103 cm*

*\$4,500.00 AUD*

[www.comagallery.com](http://www.comagallery.com)



[www.comagallery.com](http://www.comagallery.com)



**Michael Bennett**

*Highs & Lows, 2017*

*Mixed Media on Board, Framed in Tasmanian Oak*

*113 x 186 cm*

*SOLD*

[www.comagallery.com](http://www.comagallery.com)



[www.comagallery.com](http://www.comagallery.com)



**Michael Bennett**

*Focus Pull, 2017*

*Mixed Media on Board, Framed in Tasmanian Oak*

*113 x 85 cm*

*SOLD*

[www.comagallery.com](http://www.comagallery.com)



[www.comagallery.com](http://www.comagallery.com)



**Michael Bennett**

*Veil of Innocence, 2017*

*Mixed Media on Board, Framed in Tasmanian Oak*

*77.5 x 77 cm*

*SOLD*

[www.comagallery.com](http://www.comagallery.com)



[www.comagallery.com](http://www.comagallery.com)



**Michael Bennett**

*The Midnight Hour, 2016*

*Mixed Media on Board, Framed in Tasmanian Oak*

*85 x 78 cm*

*\$2,800.00 AUD*

[www.comagallery.com](http://www.comagallery.com)



[www.comagallery.com](http://www.comagallery.com)



**Michael Bennett**

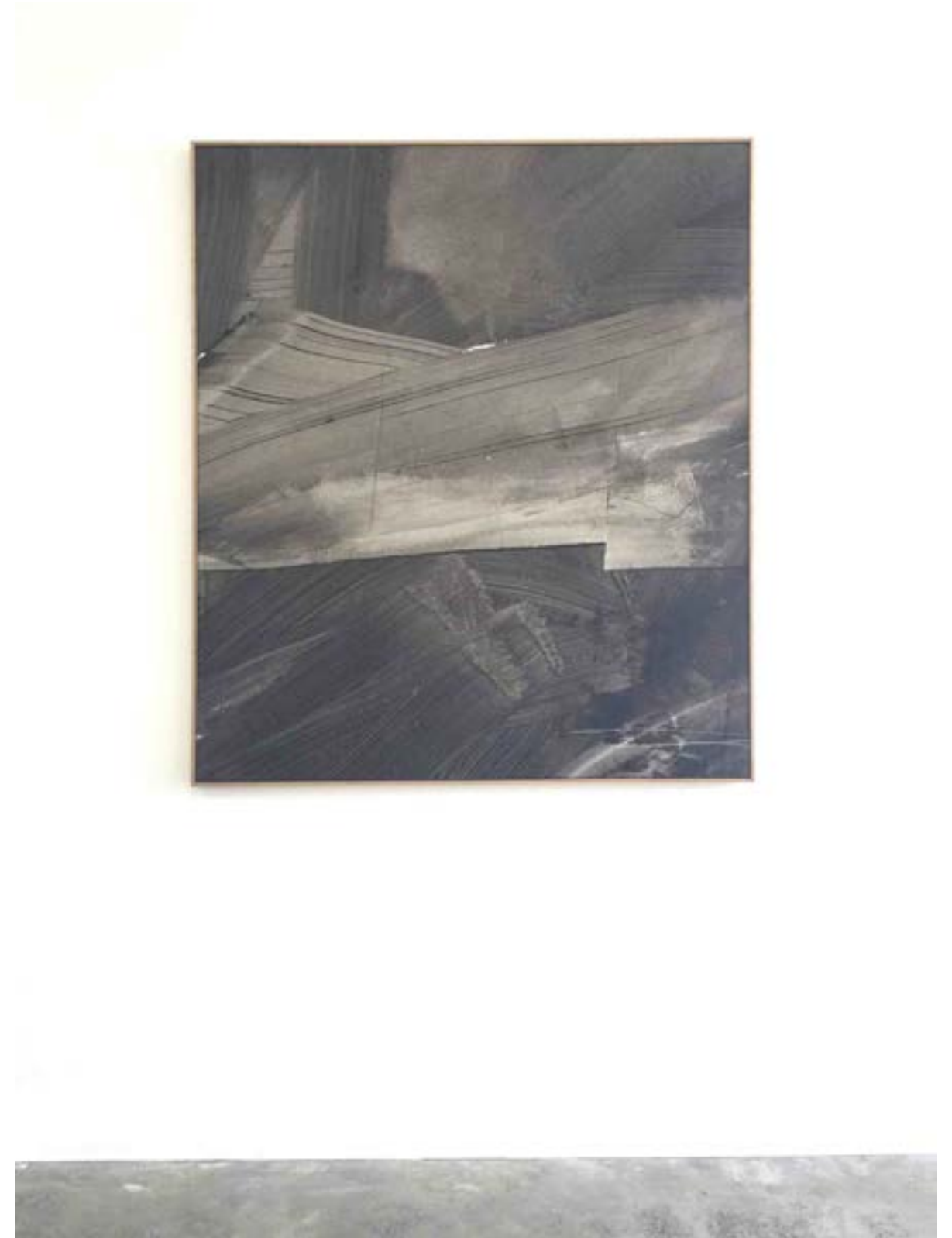
*If Freedom Had A Rythm, 2017*

*Mixed Media on Canvas, Framed in Tasmanian Oak*

*138.5 x 118.5 cm*

*SOLD*

[www.comagallery.com](http://www.comagallery.com)



[www.comagallery.com](http://www.comagallery.com)





**Michael Bennett**

*Vague Impressions Count, 2017*

*Mixed Media on Canvas, Framed in Tasmanian Oak*

*138.5 x 88 cm*

*\$4,500.00 AUD*

[www.comagallery.com](http://www.comagallery.com)



[www.comagallery.com](http://www.comagallery.com)



**Michael Bennett**

*Stop, Drop & Roll, 2017*

*Mixed Media on Board, Framed in Tasmanian Oak*

*57 x 57 cm*

*SOLD*

[www.comagallery.com](http://www.comagallery.com)

[www.comagallery.com](http://www.comagallery.com)



**Michael Bennett**

*Whirlpool, 2017*

*Mixed Media on Board, Framed in Tasmanian Oak*

*68 x 67 cm*

*SOLD*

[www.comagallery.com](http://www.comagallery.com)

[www.comagallery.com](http://www.comagallery.com)



**Michael Bennett**

*Throw Caution To The Wind, 2017*

*Mixed Media on Board, Framed in Tasmanian Oak*

*51.5 x 51.5 cm*

*SOLD*

[www.comagallery.com](http://www.comagallery.com)

[www.comagallery.com](http://www.comagallery.com)

Michael Bennett (b. Australia, 1987) is an Australian artist currently working and living in Berlin. Working predominantly in the realms of painting, sculpture and installation, his vast visual abstractions explore themes of inner discovery and opportunity, with equal emphasis placed on artistic process and the final outcome. Recent exhibitions include Muddled with mystery, Kulttuurikeskus Vanha Paukku, Lapua, Finland (2017); Present Tense, Gallery 9, Sydney (2016); Contemporary Perception, Galleri Bernoni, Copenhagen (2016); The Future Will Be Different, Mini Galerie, Amsterdam (2016); Intrigue, Wellington St. Projects, Sydney (2015) Higher Frequency, Gallery Beaustelle, Berlin (2015). Bennett has been the recipient of various residencies such as the Lapua Cultural Centre, Finland, the Institute Fur Alles Mogliche, Berlin, RoundaboutLX, Lison and 550 Park, New York.

COMA

---

For more information or any queries please contact  
[info@comagallery.com](mailto:info@comagallery.com)